



GPSLive™

INTERNET NAVIGATION



USER MANUAL

TABLE OF CONTENTS

INTRODUCTION	1
DISCLAIMER	2
DISCLAIMER OF WARRANTIES AND ACCURACY OF DATA	3
GETTING TO KNOW GPSLIVE™	4
GPSLIVE™ MOUNTING	5
PACKAGE CONTENT	5
POWERING GPSLIVE™	6
BATTERY INFORMATION	6
PRODUCT SPECIFICATIONS	7
CARE AND MAINTENANCE	7
WARRANTY / LIABILITIES	8
CUSTOMER SERVICE / CONTACT	10
FCC/ IC	11
LEGAL	11

Thank you for purchasing the latest internet connected navigation device product from Winplus North America in collaboration with deCarta. We hope you will enjoy all features and benefits offered by GPSLive™. These features and benefits were designed with the goal of making driving more convenient for the user.

GPSLive™ Internet Navigation allows your standalone GPS device to connect to the Internet and provide updated and real time searches including street addresses, businesses, recreation parks, and all other points of interest. deCarta's application incorporates a range of technology to provide all the information you need on the road.

Many of the features are described in more detail later in the GPSLive™ Operation Manual, however some key features of the device include:

Search and Browse: Search for locations on GPSLive™ Internet Navigation maps or browse lists, locally or at your destination, and points of interest, including restaurants, shopping, and things to do.

Real Time LiveTraffic and Weather: Has built-in intelligence that knows where you are travelling. GPSLive™ Navigation is constantly downloading data from traffic monitoring websites and provides the most up-to-date traffic information that is available. If it recognizes that there may be long delays, it provides you with the option to choose an alternate route. You can also check the weather conditions in your destination or your local area.

Live Map Information, Gas Prices and Movie Listings: GPSLive™ Navigation data and information are instantly update. Locate gas stations add information about gas prices where you are and along your route. Search and browse movie listings and locations around your area and let GPSLive™ guide you there.

DISCLAIMER

- Distracted driving is dangerous. Always use the GPS device in a manner that does not reduce your attention and ability to drive carefully and safely.
- Adhere to all applicable traffic laws and motor vehicle regulations applicable to the device.
- Consult local laws and regulations for any restrictions on installation or use.
- Do not install on or near an airbag. Such installation could interfere with airbag deployment or could cause the product or another object to become a projectile, which could result in serious personal injury to occupants.
- Ensure the product location will not obstruct your vision while driving.
- Observe all signs that require an electrical device or RF radio product to be switched off in the designated areas. These could include hospitals, blasting areas, and potentially explosive atmospheres.
- Turn off your device prior to boarding an aircraft. Do not use your device in an aircraft.
- Never allow children to play with the device. Small parts may be a choking hazard.
- Do not attempt to operate the device in a vehicle while the vehicle is in motion or in anyway that interferes with safe driving.
- Secure your device to the vehicle in such a way so as to not endanger the driver or passengers while driving or during operation.
- Be attentive to roadway signage, all posted roadway information, and the condition of the road itself. Calculated routes are for reference only; users must obey all traffic signs and local regulations.
- GPS positioning is intended for use as reference, not precise measurement of direction, distance or topography.
- Do not place the device where it will block the driver's vision.
- Do not place the device where the airbags are located or where the airbags could deploy.
- Do not place the device anywhere in the vehicle without securing it in the holder.
- Do not place your device in any area of the vehicle where the use of electronic displays is prohibited in motor vehicles.
- Do not use the device in a wet location.
- Do not use the device close to hot areas such as radiators, stoves, or other products that produce heat.
- Do not leave the product in direct sunlight or heat for extended periods of time. Overheating the battery can be dangerous and/or cause malfunctions.
- Do not push objects of any kind into cabinet slots or other openings in product. Slots provided for ventilation must not be blocked or covered.
- Do not use product on unstable table, cart, stand, tripod or bracket. Any mounting of the product should follow manufacturer's instructions, and should use a manufacturer-recommended mounting accessory.
- Use the correct external power source indicated on the electrical ratings label.
- Handle battery packs carefully. Battery pack could burn or explode if handled improperly. Do not open,

crush, or puncture battery pack. Do not dispose of battery pack in fire or water, or expose battery pack to direct sunlight.

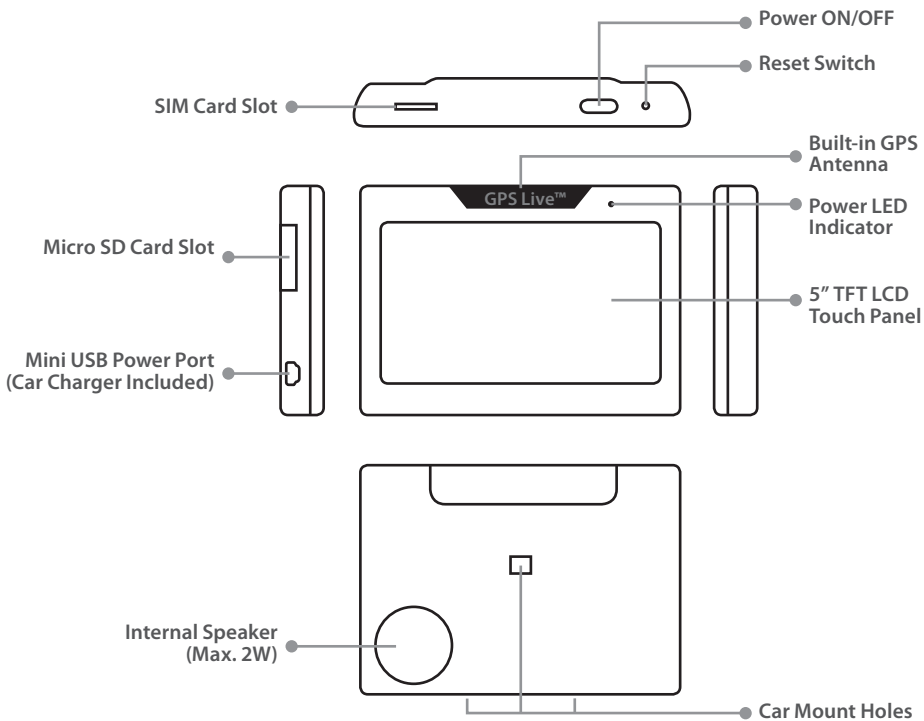
- GPS signals cannot pass through opaque solid materials. Obstacles, such as tall buildings, tunnels, dense trees and bad weather can affect signal reception. Window tint that contains metallic material can affect GPS signal as well. Cordless phones, radar detectors, satellite radio receivers, and other wireless devices may also interfere with GPS reception.
- It may take a few minutes to successfully acquire GPS signals when turning on the GPS device for the first time. Complete this procedure in an outdoor open space.
- Map database may not cover one hundred percent of all areas and/or addresses listed.
- This device may not be used for any purpose in which failure could lead to personal injury, physical, or environmental damage.
- Software version and user manual contents are subject to change without notices.
- Manufacturer is not responsible for any product defects due to misuse, abuse, or usage of product in way that is not in compliance with the written product instructions. To use this product other than expressed in the instructions will void customer's product warranty.

DISCLAIMER OF WARRANTIES AND ACCURACY OF DATA

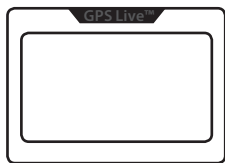
Although the information found in this document is believed to be reliable, no warranty, expressed or implied, is made regarding the accuracy, adequacy, completeness, legality, reliability, or usefulness of any information, either isolated or in the aggregate. The information is provided "as is". All warranties of any kind, express or implied, including but not limited to the implied warranties of merchantability, fitness for a particular purpose, and non-infringement of proprietary rights, are disclaimed. Changes may be periodically made to the information by deCarta; these changes may or may not be incorporated into this document.

Since the use of the software and the conditions by which the software are used are beyond the control of deCarta, Inc., it is the obligation of the customer to determine the correct and safe selection and settings and conditions of use of the software. To the extent that the law permits, any liability which may be incurred as a result of the use or future use of software developed by deCarta, Inc. is limited to the cost of repairing or replacing the failed software within the warranty period, and does not extend to any loss or damage which may be caused as a consequence of misuse or the software. deCarta makes no representations or warranties regarding results that may be obtained from a user modification of the software and said modification shall be done at your own discretion and risk. deCarta shall not in any event be liable for economic loss of profits, indirect, special, bodily injuries or consequential damages.

GETTING TO KNOW GPSLIVE™



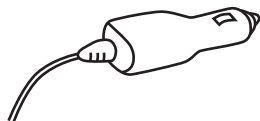
PACKAGE CONTENT



5" GPSLive™

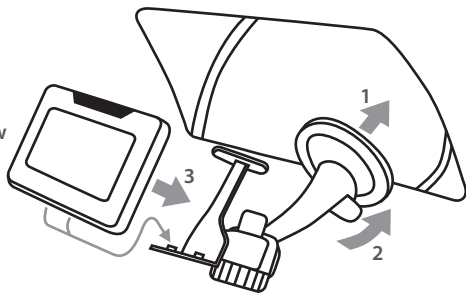
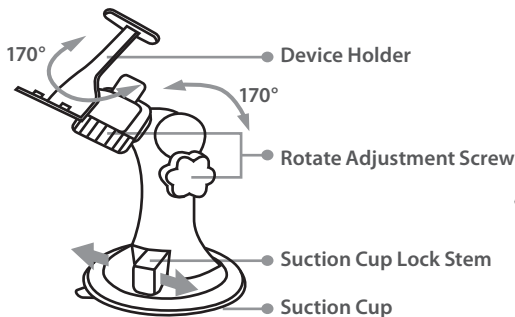


Car mount



Car charger

GPSLIVE™ MOUNTING

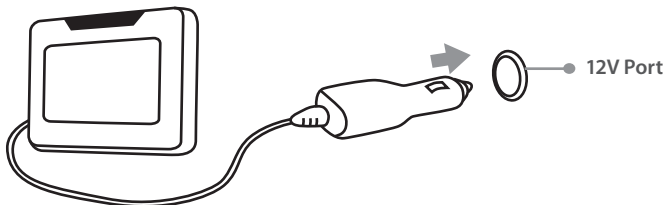


1. Find a place to position the suction cup where it doesn't interfere with your vision of the road.
2. With the suction cup lever in the up or off position, push the suction cup against the glass, then push the suction cup lever to the down or on position. Doing so creates the suction needed to secure the car mount to the glass.
3. Once the car mount is secured to the windshield, attach the car mount to the GPS device to the device holder slots. You will hear a "click" when the GPS device is securely attached to its holder.
4. To release the car mount from the windshield, simply pull the suction cup lever up to its off position.

POWERING GPSSLIVE™

! **IMPORTANT:** Follow these guidelines to achieve the full battery life of the built-in lithium-ion battery. Failure to follow may damage the GPS device or cause serious injury.

1. Plug the car charger into the mini USB connector (USB port) on left side of the GPS device.
2. Plug the other end of the car charger into your vehicle's DC Power receptacle.



BATTERY INFORMATION

! **IMPORTANT:** Follow these guidelines to achieve the full battery life of the built-in lithium-ion battery. Failure to follow may damage the GPS device or cause serious injury.

- Charge the battery while driving for first time use
- Only use the provided 12V charger
- Do not leave the unit exposed to a high and extreme temperature location.
- Do not remove the battery from the device.
- Properly dispose the unit/battery by contacting your local disposal department.

PRODUCT SPECIFICATIONS

Operation System	Microsoft Windows CE 5.0
Display	5" 480 X 272 pixels TFT LCD with Touch Panel
CPU	ARM9 400MHz 32bit microprocessor
GPS Receiver	Built-in high sensitivity GPS chipset, 48GPS Receiver Channels
Antenna	Built-in internal antenna
Internal Memory	DDR2 SDRAM 64MB/ 128MB (optional), NAND Flash 2GB/ 4GB (optional)
Audio	Internal speaker 1W with 3.5 mm stereo earphone jack
Power Source	Mini USB connector DC 5V/1.5A
Battery	Rechargeable Li-Polymer battery 1700mAh Continuous operating 3 hrs Charging time 3 hrs, 5V/1.5A
Interface	1 microSD socket; 1 Mini USB connector
LED Indicator	Green Power ON mode or fully charged when device is switched ON Red Battery is charging LED Off Power OFF mode or fully charged when device is switched OFF
Temperatures	Operating -20°C ~ 60°C Storage -30 °C ~ 70 °C
Dimension	130*90*29 mm

CARE AND MAINTENANCE

- Turn off the device when not in use
- Do not let the device be in contact with liquid as it is not waterproof. Avoid putting it in places where there is excessive moisture and humidity.
- Do not expose the device to direct sunlight nor place in areas with high temperature, as it may result in an explosion.
- If the device is not in use for a prolonged period, store in a cool, dry place, free from moisture, humidity and dust.
- Do not use abrasive cleaning solvents to clean the device.
- Do not expose the device to come in contact with sharp objects as this will cause scratching and damage.
- Do not stick anything inside the device as this may damage internal components
- Do not attempt to disassemble the device, as it does not contain serviceable components
- Only use the manufacturer supplied charger when charging the device

- Only charge the device's built-in battery in accordance with the instructions of this user guide
- Do not disassemble the charger as it may expose you to dangerous voltages or other risks. Incorrect reassembly can cause electric shock when the device is subsequently used
- Do not use the charger outdoors or in damp areas
- Avoid charging the device in extremely high or low temperatures
- It's recommended to charge the device immediately whenever low battery power is encountered to prolong durability & standby time of battery

WARRANTY / LIABILITIES

WINPLUS NORTH AMERICA

LIMITED WARRANTY

Winplus North America warrants, to the original purchaser, that its products are free from defects in material and workmanship for 1 year from the date of original purchase. Where permitted by law, Winplus North America's liability shall be limited to that set forth in this limited express warranty. This limited express warranty shall be the exclusive remedy of the purchaser and Winplus North America makes no other warranty of any kind aside from the limited express warranty stated above.

Note: Warranty only applies for North American customers or purchases made in the North America.

CONDITIONS OF WARRANTY

If during the 1 year warranty period your new product is found to be defective, Winplus North America will repair such defect, or replace the product, without charge for parts or labor subject to the following conditions:

1. All repairs must be performed by Winplus North America.
2. All warranty claims must be accompanied by a copy of the sales receipt or bill of sale.
3. The equipment must not have been altered or damaged through negligence, accident, improper operation, or failure to follow the product instructions for installation, use, or care.
4. The replacement of parts is excluded from the warranty when replacement is necessary due to normal wear and tear.
5. Repair or replacement parts supplied by Winplus North America under this warranty are protected only for the unexpired portion of the original warranty.
6. This is a "repair or replace" warranty only, and does not cover the costs incurred for the installation, removal or reinstallation of the product, or damage to any mobile phone device or vehicle.

OWNER'S RESPONSIBILITIES:

Winplus North America will make every effort to provide warranty service within a reasonable period of time.

SHOULD YOU HAVE ANY QUESTIONS ABOUT SERVICE RECEIVED OR IF YOU WOULD LIKE ASSISTANCE IN OBTAINING SERVICE, PLEASE CALL TOLL FREE 1.866.294.9244 DURING REGULAR BUSINESS HOURS MONDAY THROUGH FRIDAY 9:00 AM TO 5:00PM.

In order to provide you with the proper warranty service, we request that you adhere to the following procedure:

1. Include a copy of your sales receipt or bill of sale with your unit when it is returned for warranty service.
2. If it is necessary to return your product for service, please return it securely packed, preferably in the original shipping box, and freight and insurance prepaid to the following address:

ATTN: CUSTOMER CARE GPSLive™
820 South Wanamaker Ave.
Ontario, CA 91761

3. Please include a detailed explanation of the problem you are having.
4. If your product is found by Winplus North America to have a defect in material or workmanship, within the warranty period, it will be repaired or replaced at no charge and returned to you prepaid.

Winplus North America makes no other warranty of any kind aside from the limited express warranty stated herein.

DISCLAIMER OF WARRANTIES, INCLUDING WARRANTY OF MERCHANTABILITY AND WARRANTY OF FITNESS FOR PARTICULAR PURPOSE: EXCEPT AS SPECIFICALLY SET FORTH HEREIN, NO WARRANTY OR REPRESENTATION, EXPRESS OR IMPLIED, IS MADE AS TO THE GPSLive™ Internet Navigation. EXCEPT AS EXPRESSLY SET FORTH HEREIN, WINPLUS NORTH AMERICA AND/OR ITS AFFILIATES EXPRESSLY DISCLAIMS, WITHOUT LIMITATION, ANY STATUTORY WARRANTIES AND ALL IMPLIED WARRANTIES, INCLUDING ANY IMPLIED WARRANTY OF MERCHANTABILITY OR FITNESS FOR A PARTICULAR PURPOSE.

Winplus North America and/or its affiliates are not responsible for a user's intended or actual use of the **GPSLive™ Internet Navigation**. In no event shall WINPLUS North America and/or its affiliates have any liability for any losses (whether direct or indirect, in contract, tort or otherwise) incurred in connection with the **GPSLive™ Internet Navigation**. Neither shall WINPLUS North America and/or its affiliates have any liability for any decision, action or inaction taken by any person in reliance on the **GPSLive™ Internet Navigation**, or for any delays, inaccuracies and/or errors in connection with the **GPSLive™ Internet Navigation** and its functioning.

Winplus North America and/or its affiliates shall have no responsibility or liability for damage and/or injury resulting from accidents while user is utilizing the **GPSLive™ Internet Navigation**; and WINPLUS North America and/or its affiliates, the manufacturer, distributor and seller shall not be liable for any injury, loss or damage, incidental or consequential, arising out of the use or intended use of the product.

CUSTOMER SERVICE / CONTACT

For questions or issues regarding the product, please visit www.letsyada.com or contact Winplus in your area/region to speak to our customer service representative:

Winplus North America
820 South Wanamaker Ave., Ontario, CA 91761
customercare@winplususa.com
Tel. 866-294-9244
Tel. 310-638-0588

Winplus Europe
Unit 4, Two Country Estate, Falconer Road, Haverhill, Suffolk, CB9 7XZ, UK
Tel. 44-1440-713888

Winplus Australia
Unit 2, 991 Mountain Hwy Boronia, Victoria, Australia 3155
Tel. 61-3-9720-4143

Winplus New Zealand
22-24 Olive Road, Penrose
Auckland, New Zealand
Tel. 62-9-5254575

Winplus Asia
Suite 6-11 7th Flr Corporation Park 11 On Lanai St.
Shatin NT, Hong Kong
Tel. 852-2798-8932

You can also contact us online by visiting www.winplus.com for more information about the product.

IF YOU ARE EXPERIENCING ANY ISSUES WITH THE PRODUCT DURING OPERATION, DO NOT RETURN THE PRODUCT TO THE STORE. CONTACT WINPLUS DIRECTLY FOR INSTRUCTIONS ON HOW TO RETURN/ EXCHANGE THE PRODUCT.

Federal Communication Commission Interference Statement

GPSLIVE GPS Model Number S3000: It is here with confirmed and found to comply with the requirements set up by ANSI C63.4 & FCC Part 15 regulations for the evaluation of electromagnetic compatibility. This device complies with Part 15 of the FCC rules; operation is subject to the following two conditions: (1) This device may not cause harmful interference and, (2) This device must accept any interference received, including interference that may cause undesired operation.

© 2010 Winplus North America Inc. All Rights Reserved. Winplus, the Winplus logo, the Yada logo and the GPSLive logo are trademarks or registered trademarks of Winplus North America Inc.

© 2008 deCarta, Inc. All rights reserved.

deCarta, the deCarta logo, Drill Down Server, Rich Map Engine, and Traffic Manager are trademarks or registered trademarks of deCarta, Inc. in the United States and/or other countries. All other company, brand and product names are marks of their respective holders. This product or document is protected by copyright and distributed under the terms of a license agreement, restricting its use, copying, distribution and decompilation ("License Agreement"). No part of this document may be distributed without written consent from deCarta.

The product described in this document may be protected by one or more U.S. patents, foreign patents, or pending applications. U.S. Patent Number: 5,963,956 and 6,647,269.
U.S. Patents Pending.

WINPLUS

www.winplus.com